



## **JAMPRO JEPD ANTENNA ELLIPTICALLY POLARIZED DIPOLE FLAT PANEL**

**Band II**

**Excellent for multi-user applications**

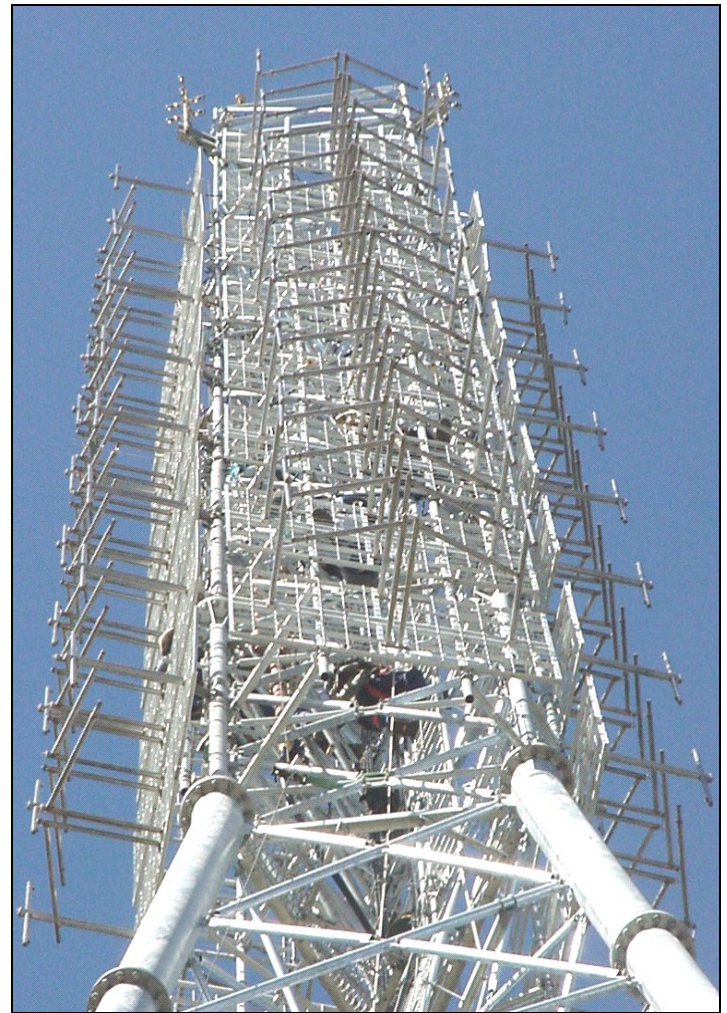
**Excellent VSWR & bandwidth without field tuning**

**Omni-directional or custom directional patterns**

**Multi or single station use**

**Radomes available**

**DC ground at each bay**



The JAMPRO JEPD antenna is a elliptically polarized dipole flat panel antenna system. Rugged galvanized steel construction insures many years of dependable performance in even the harshest environments. Protective lightweight radomes may be added as protection against heavy ice buildup. The JEPD antenna has proven to have excellent bandwidth with typical VSWR of <math><1.1:1</math> or better. Many standard and custom directional patterns are available to fit your coverage requirements.



#BAYS	Panels Per Bay	Gain Hpol (70%)	Gain Vpol (30%)	Net Weight (pounds)	Windload (pounds)
1	1	2.24 x / 3.50 dBd	0.96 x / -0.18 dBd	Contact Factory	
	2	1.12 x / 0.49 dBd	0.48 x / -3.19 dBd		
	3	0.77 x / -1.13dBd	0.33 x / -4.81 dBd		
	4	0.56 x / -2.52 dBd	0.24 x / -6.20 dBd		
2	1	4.48 x / 6.51 dBd	1.92 x / 2.83 dBd		
	2	2.24 x / 3.50 dBd	0.96 x / -0.18 dBd		
	3	1.54 x / 1.88 dBd	0.66 x / -1.80 dBd		
	4	1.12 x / 0.49 dBd	0.48 x / -3.19 dBd		
4	1	8.96 x / 9.52 dBd	3.84 x / 5.84 dBd		
	2	4.55 x / 6.58 dBd	1.95 x / 2.90 dBd		
	3	3.15 x / 4.98 dBd	1.35 x / 1.30 dBd		
	4	2.31 x / 3.64 dBd	0.99 x / -0.04 dBd		
6	1	13.44 x / 11.28 dBd	5.76 x / 7.61 dBd		
	2	6.86 x / 8.36 dBd	2.94 x / 4.68 dBd		
	3	4.76 x / 6.77 dBd	2.04 x / 3.09 dBd		
	4	3.43 x / 5.35 dBd	1.47 x / 1.67 dBd		
8	1	17.92 x / 12.53 dBd	7.68 x / 8.85 dBd		
	2	9.24 x / 9.66 dBd	3.96 x / 5.98 dBd		
	3	6.44 x / 8.09 dBd	2.76 x / 4.41 dBd		
	4	4.62 x / 6.65 dBd	1.98 x / 2.97 dBd		

\*Values provided are based upon a 70% Hpol / 30% Vpol Split. Gains do not include losses for feed system beam tilt or null fill.

- NOTES:**
- Weights and windload contact factory
  - All inputs EIA flange, female. 50 ohms
  - In an omni-directional configuration, circularity is  $\pm 1.5$  dB or better. Directional patterns available.
  - Axial ratio is typically better than 1.0 dB
  - VSWR for individual panels and complete systems = 20% bandwidth under 1.1:1 available
  - Polarization is circular
  - Power rating per cavity varies with input power.
  - Three panel per bay gains are 0.47 (omni) per layer.
  - Total number of frequencies limited only by total input power
  - Based on 6'/1.82m cavity. Available sizes 8'/2.44 m, 10'/3.05m, & 12'/3.66m. Contact factory for details.
  - Radomes optional. Specifications upon request
  - Power and dB gains are typical RMS gains for omni-directional, horizontal and vertical components.
- OPTIONS:**
- FCC Directionalization, Pattern Measurement Service, Electrical Beam Tilt, Null Fill, Special Mounting Brackets.

Since many factors contribute to a station's compliance with the FCC exposure guidelines for radio frequency radiation, JAMPRO ANTENNAS, INC. cannot accept any responsibility in this matter. The station must examine and determine its status based on each individual situation. For reduced low angle radiation near the tower, a low RFR model of this antenna is available. Contact the factory for pricing data and further details. HD Radio™ is a registered trade mark of Ibisquity Digital Corporation.

\*All specifications are subject to change without notice.