



## THE JAMPRO OPTIMIZER HIGH POWER FM BROADCAST ANTENNA

The JAMPRO JBCP-H FM side mount antenna is designed for broadcast applications that require relative insensitivity to icing conditions as well as high power handling. Each element is fabricated with high strength thick wall brass and copper with a 3-1/8" outside diameter. Capable of handling 40 KW, the JBCP-H is one of the highest power side mount FM antennas available. On a single frequency, VSWR is 1.1:1 +/- 200 KHz or better. Radomes are not normally needed, because even with 1/2" of radial ice, typical VSWR is still less than 1.4:1. Each JBCP-H antenna is factory VSWR tuned; optional field tuning may improve VSWR.

**Outstanding VSWR without the need for field tuning**

**DC grounded for lightning protection**

**Excellent diplexing capabilities**

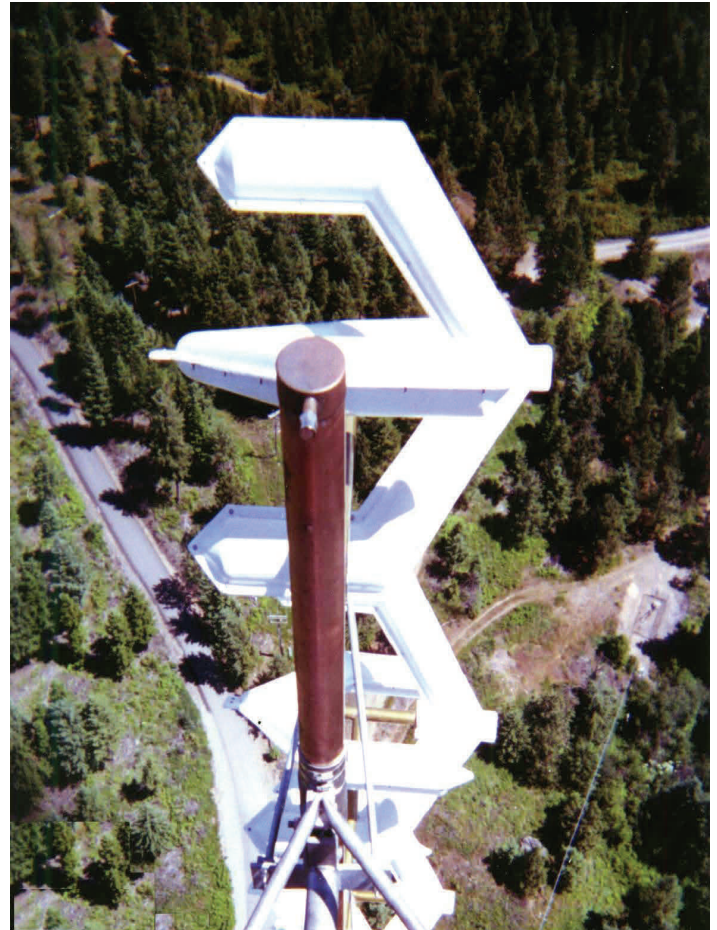
**Circular or elliptical polarization**

**High power handling**

**Beam tilt and null fill available**

**Custom directional patterns available**

**FCC Directionalization available**



This antenna is designed with the same principles as JAMPRO's patented PENETRATOR series of FM antennas, which set the industry standard for FM side mount antennas. Optional 6-1/8" Center Feed available for higher power handling. The shunt fed design eliminates the need to "slug tune" the antenna in the field for optimum performance. Unlike similar, older designs, the Optimizer uses low impedance bays for un-excelled stability and band pass.



## JAMPRO JBCP-H FM Broadcast Antenna

# of Bays	Power Gain	Gain (dB)	Net Weight (lbs.)	Windload with no ice (lbs.)	Windload with 1/2" radial ice (lbs.)	Windload with radomes (lbs.)
1	.46	-3.37	142	190	260	368
2	1.0	0.0	316	448	610	806
3	1.5	1.76	491	706	960	1243
4	2.1	3.22	665	965	1311	1680
5	2.7	4.31	840	1223	1661	2117
6	3.2	5.05	1014	1481	2011	2554
8	4.3	6.34	1399	2072	2810	3503
10	5.5	7.40	1748	2589	3511	4377
12	6.6	8.20	2097	3105	4211	5251

**Notes:**

- Weights and wind loads shown include standard leg brackets.
- Wind loads based on 50/33 PSF (98 MHz midband).
- 1-bay through 6-bay configurations are end-fed, standard. Center feeding is available. 7-bay through 12-bay configurations are center-fed, standard.
- Feed points: 3 ft. below bottom bay when end-fed, 104 inches below center when center fed.
- All inputs EIA flange, female.
- Power and dB gains are typical for horizontal and vertical components.
- Custom mounting brackets available.
- Specifications shown based on 3-1/8" input, end fed through 8 bays. 4-1/16" & 6-1/8" ETA option available.
- Free space azimuth circularity is +/- 2dB.
- Polarization is right hand, clockwise, circular.
- Optional fine matcher available. Contact factory for details

**Options:**

Options available include FCC Directionalization, Pattern Measurement Service, beam tilt, null fill, and special mounting brackets.

Since many factors contribute to a station's compliance with the FCC exposure guidelines for radio frequency radiation, JAMPRO ANTENNAS, INC. cannot accept any responsibility in this matter. The station must examine and determine its status based on each individual situation. For reduced low angle radiation near the tower, a low RFR model of this antenna is available. Contact the factory for pricing data and further details.

\*All specifications are subject to change without notice.