



## THE JAMPRO JCPD 4-DIPOLE FLAT PANEL ANTENNA

The JAMPRO JCPD antenna is a circularly polarized 4-dipole flat panel antenna system. Rugged galvanized steel construction insures many years of dependable performance in even the harshest environments. Protective lightweight dipole radomes may be added as protection against heavy ice buildup. The JCPD antenna has proven to provide excellent bandwidth, with typical VSWR of <math><1.1:1</math> or better. Many standard and custom directional patterns are available to fit any of your coverage requirements.

**Bands I (54-88 mhz)**

**Band III (87.5-108 mhz.)**

**Band III (174-230 mhz.)**

**Excellent for multi-frequency,  
broadband applications**

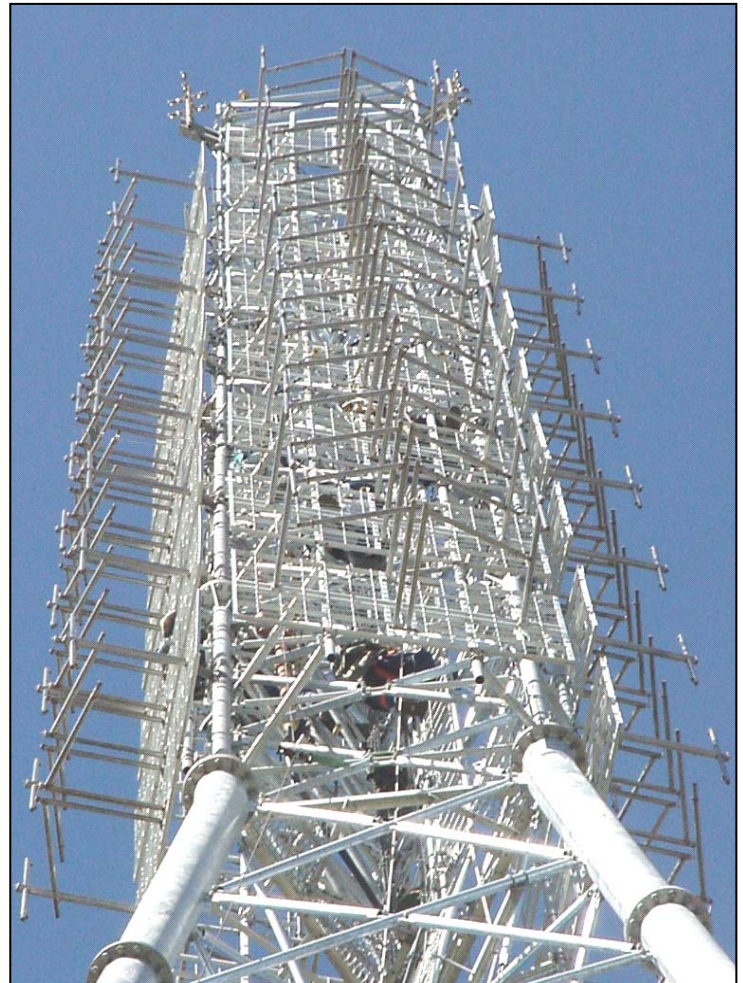
**Omni-directional or custom directional  
patterns available**

**Rugged construction of stainless steel,  
marine brass and hot dipped galvanized steel**

**All insulators constructed from virgin Teflon**

**Radomes & custom mounting brackets available**

**Pressurized feed system and dipoles**



The design of this circularly polarized antenna may be configured to include varying levels of vertical polarization, with results ranging from small amounts of elliptical polarization to full circular polarization.



# Bays	Panels per Bay	Gain (times)	Gain (dB)	Height (ft/m)	Projected Area (sq. ft)
1	2	1.6	2	7ft / 2.13m	Contact Factory
	3	1.1	0.4		
	4	0.8	-1		
2	2	3.2	5.1	17ft / 5.18m	
	3	2.2	3.4		
	4	1.6	2		
4	2	6.5	8.1	37ft / 11.27m	
	3	4.5	6.5		
	4	3.3	5.2		
6	2	9.8	9.9	57ft / 17.87m	
	3	6.8	8.3		
	4	4.9	6.9		
8	2	13.2	11.2	77ft / 23.47m	
	3	9.2	9.6		
	4	6.6	8.2		
10	2	16.5	12.17	97ft / 29.57m	
	3	11.0	10.4		
	4	8.25	9.15		
12	2	19.8	12.96	117ft / 35.66m	
	3	13.2	11.2		
	4	9.9	9.95		

\*Values provided average/RMS gains; All other stated gains are Peak gains. Gains do not include losses for feed system beam tit or null fill.

**NOTES:**

- Weights and wind loads contact factory
- Total area shown in feet and are subject to change.
- All inputs EIA flange, female, 50 ohm.
- Polarization is circular.
- Input power capability available in many different ratings.
- Optimized bandwidth over nominal 50 ohm VSWR of 1.1:1 available. Contact factory for details.

- Power gain is based on half wave dipole in free space.
- Radomes optional. Contact factory for details.
- Weights and wind loads calculated without ice.
- All specifications are subject to change.

**OPTIONS:**

Options available include FCC-Directionalization, Pattern Measurement Service, Beam tilt and Null fill, Special mounting brackets.

**Non-ionizing Radiation**

Since many factors contribute to a station's compliance with the FCC exposure guidelines for radio frequency radiation, JAMPRO ANTENNAS, INC. cannot accept any responsibility in this matter. The station must examine and determine its status based on each individual situation.

\*All specifications are subject to change without notice.